



Bob Cook Memorial Mt. Evans Hill Climb
Gran Fondo & Colorado State Master and Senior State Championship Hill Climb
Saturday, July 23, 2022

ONLINE REGISTRATION ONLY!
REGISTRATION CLOSING WEDNESDAY, JULY 20 at NOON
(OR WHEN OVERALL FIELD LIMIT OF 1200 RACERS TO THE SUMMIT IS REACHED)
REGISTRATION BEFORE May 15 SAVE \$10 OFF FULL PRICE

NO RACE DAY REGISTRATION

Registration link for Gran Fondo: <https://www.bikereg.com/bob-cook-memorial-mt-evans-hill-climb-gran-fondo>

Registration link for USAC Race: <https://www.bikereg.com/bob-cook-memorial-mt-evans-hill-climb>

NOTE FIELD LIMITS PER CATEGORY – REGISTER EARLY!



PRIMAL



The Mt. Evans Hill climb is an iconic bicycle race that takes place on Mount Evans, Colorado. It was run for the first time in 1962. It was renamed in 1981 in honor of five-time race winner Bob Cook, who died of cancer at the age of 23.

Held under permit from the US Forest Service and race is held on US Forest Service land. Permitted by USA Cycling.
Gran Fondo (Citizens Race) USAC Permit # 2022 -5302 USA Cycling Categories: USAC Permit # 2022 -5303

Chief Referee: Marco Vasquez

USAC Clubs: **Racer X Cycling/Colo Bike Law, Team Evergreen Cycling**

CV19 SAFETY: We will closely monitor and adhere to guidelines from national and local health officials and offer our riders a safe event. All athletes that are not feeling well are asked to stay at home.

START LINE 320 Chicago Creek Road (THE OLD MIDDLE SCHOOL) IN IDAHO SPRINGS – FINISH IS AT THE SUMMIT

RACE DISTANCE 28 MILES, EXCEPT FOR JUNIORS 9-16, WHICH IS 11.1 MILES, START TO ECHO LAKE

Course Description: This epic climb takes place on the highest paved road in the United States. It's a 7,000' of climb from an elevation of 7,500' all the way up to 14,100 feet. **There will be an aid station at Echo Lake with water, hydration mix and gels. Water, hydration mix and gels will also be available at the summit. Be prepared to ride down to your car.**

What is the difference between Gran Fondo and USA Cycling Categories? USA Categories are for individuals interested in competitive racing and do it on a regular basis or are planning to race on a regular basis. A USAC license or 1-Day license is required for USAC categories. A CCO membership is required for all USAC Categories. **Gran Fondo is the citizen's event and is timed -- NO USAC License or CCO membership required.**

Gran Fondo (Citizen's Race) Fees

- \$140 February – May 15, 2021
- \$150 May 16 – July 21, 2021
- **NO RACE DAY REGISTRATION, ONLINE PRE-REGISTRATION ONLY**
- Registration includes Commemorative Jersey and Post Ride Party with 1 free beer

USA Cycling Categories – Adult Categories

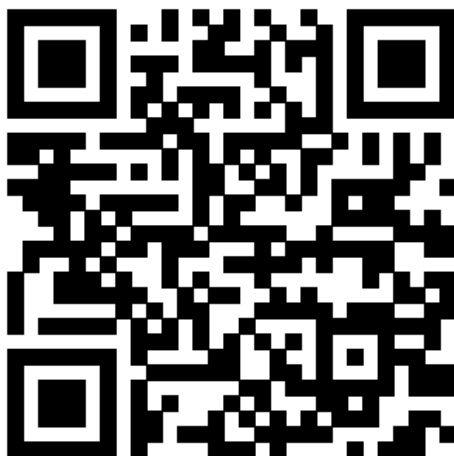
- \$85 February – May 15, 2021
- \$95 May 16 – July 21, 2021
- **NO RACE DAY REGISTRATION, ONLINE PRE-REGISTRATION ONLY**
- Registration includes Post Ride Party with 1 free beer
- Juniors registering for adult categories are required to pay adult category fee

USA Cycling Categories – Junior Categories

- \$20 February – May 15, 2021
- \$30 May 16 – July 21, 2021
- **NO RACE DAY REGISTRATION, ONLINE PRE-REGISTRATION ONLY**
- Registration includes Post Ride Party & 1 free Root beer
- GEAR RESTRICTIONS apply to all juniors 9-18. See USAC Rule 114. BIKE RESTRICTIONS apply to juniors 14 and under. See USAC Rule 115.
- Juniors 9-16 race from the Start (Old Middle School) to Echo Lake. Juniors 17-18 race from the Start to the Summit.

One Day License Registration link for USAC For RACE ONLY, NOT Gran Fondo:

<https://membership.usacycling.org/one-day/5098>



Important USA Cycling Category Information:

- **USAC License Required for USAC Race Categories only, Not for GRAN FONDO.** Available here: www.usacycling.org
- USA Cycling Categories: ColoradoCycling.org (CCO – coloradocycling.org) fee is \$5 if you are not an active CCO member. If you purchase a 1 Day USA Cycling license, or an **out-of-state license**, you are not required to pay an additional \$5
- USA Cycling Rules apply (www.usacycling.org)
- Colorado State Championship Eligibility Rule: Only current USAC annual licensees who are USA citizens or permanent residents and reside in the local association area known as CCO as shown on their license are eligible to compete for the State (CCO) Championship Title. Professional men and women are welcome to race, but are not eligible for State (CCO) Championship title, medal or jersey.
- Some starts may be combined for safety and to provide a better racing experience.
- **Chip Timing:** Chip timing will be used at this event; chips will be provided to all Gran Fondo and USAC category riders in your race packet. **No Chip= Last Place with no time.**

Please note that there are no refunds for Gran Fondo or USAC categories.

RACE DAY SCHEDULE

Category	State Championship & Cup	Route	Early Registration	Regular Registration	Field Limit	Start	Prize/Places
Gran Fondo (Citizen's - Men & Women, 17-29, 30-39, 40-49, 50-59, 60-69, 70+)	NO	Base to Summit	\$140	\$150	500	6:45 AM	Medals Commerative Jersey w/reg
USAC Categories							
Tandems	NO	Base to Summit	\$160	\$170	10	7:00 AM	Prizes/3
Handcyclists	NO	Base to Summit	\$85	\$95	10	7:05 AM	Prizes/3
Women 50+	x	Base to Summit	\$85	\$95	20	7:10 AM	Prizes/3
Women 60+	x	Base to Summit	\$85	\$95	15	7:10 AM	Prizes/3
Men 70+	x	Base to Summit	\$85	\$95	10	7:15 AM	Prizes/3
Men 60+	x	Base to Summit	\$85	\$95	40	7:18 AM	Prizes/3
Women 4	x	Base to Summit	\$85	\$95	35	7:25 AM	Prizes/3
Beginner Women 5	NO	Base to Summit	\$85	\$95	30	7:25 AM	Prizes/3
Beginner Women 40+ 5	NO	Base to Summit	\$85	\$95	10	7:25 AM	Prizes/3
Women 17-18	NO	Base to Summit	\$85	\$95	10	7:25 AM	Prizes/3
Women 40+	x	Base to Summit	\$85	\$95	20	7:30 AM	Prizes/3
Men 4	x	Base to Summit	\$85	\$95	55	7:35 AM	Prizes/3
Men 17-18	NO	Base to Summit	\$85	\$95	20	7:35 AM	Prizes/3
Beginner Men 5	NO	Base to Summit	\$85	\$95	75	7:40 AM	Prizes/3
Beginner Men 40+ 5	NO	Base to Summit	\$85	\$95	25	7:40 AM	Prizes/3
Men 50 + 4	x	Base to Summit	\$85	\$95	35	7:45 AM	Prizes/3
Men 50+ 1-2-3	x	Base to Summit	\$85	\$95	30	7:50 AM	Prizes/3
Men 9-10	NO	Base to Echo Lake	\$20	\$30	10	7:55 AM	Prizes/3
Men 11-12	NO	Base to Echo Lake	\$20	\$30	10	7:55 AM	Prizes/3
Women 9-10	NO	Base to Echo Lake	\$20	\$30	10	8:00 AM	Prizes/3
Women 11-12	NO	Base to Echo Lake	\$20	\$30	10	8:00 AM	Prizes/3
Women 13-14	NO	Base to Echo Lake	\$20	\$30	15	8:05 AM	Prizes/3
Women 15-16	NO	Base to Echo Lake	\$20	\$30	15	8:05 AM	Prizes/3
Men 13-14	NO	Base to Echo Lake	\$20	\$30	15	8:10 AM	Prizes/3
Men 15-16	NO	Base to Echo Lake	\$20	\$30	15	8:10 AM	Prizes/3
Men 40 + 4	x	Base to Summit	\$85	\$95	50	8:15 AM	Prizes/3
Men 40+ 3	x	Base to Summit	\$85	\$95	40	8:15 AM	Prizes/3
Men 40+ 1-2-3	x	Base to Summit	\$85	\$95	40	8:20 AM	Prizes/3
Women 3	x	Base to Summit	\$85	\$95	20	8:25 AM	Prizes/3
Women Pro 1-2	x	Base to Summit	\$85	\$95	20	8:30 AM	Prizes/3
Men 3	x	Base to Summit	\$85	\$95	50	8:35 AM	Prizes/3
Men Pro 1-2	x	Base to Summit	\$85	\$95	30	9:00 AM	Prizes/3

Packet Pick-Up: If you register by June 30th, your race packets will be available for pick-up at bike shop locations TBA. Otherwise, you will need to pick up your race packet at Race Headquarters, in Idaho Springs, Friday, July 22nd 1:00 pm - 6:00 pm, or race morning, 5:00 am – 9:00 am. (Locations and times listed below.)

* If you are registered for the race, bring your USAC license to packet pickup. Timing Chips will be included in the race packet and picked up before the race with instructions for proper placement. Correct number placement diagram will be included in packets. Merchandise i.e., jerseys will also be included in your packets. **Note: to guarantee jersey size and availability, order must be placed by April 20th.** Pick-up locations and time will also be posted on Facebook and on www.bicyclerace.com.

Packet Pickup Locations and times:

	July 17h, Sunday, 12 pm – 4:00 pm TBD
--	--

	<p><u>July 22nd, Friday, 1:00 pm - 6:00 pm</u> Race Headquarters/ Start line 320 Chicago Creek Rd Idaho Springs, CO 80452</p>
	<p><u>July 23rd, Saturday – RACE DAY, 5:00 am – 9:00 am</u> *NOTE NO RACE DAY REGISTRATION* Packet pick up only. Race Headquarters/ Start line 320 Chicago Creek Rd Idaho Springs, CO 80452</p>

NO RACE DAY REGISTRATION – ONLINE PRE-REGISTRATION ONLY!

Directions to Race:

320 Chicago Creek Rd Idaho Springs, CO 80452

From Denver (East): 32.4 miles West on US Interstate 70 to Idaho Springs and take the "Mt. Evans" exit (#240)

From Dillon (West): 36 miles East on US Interstate 70 to Idaho Springs (thru Eisenhower Tunnel) & take the "Mt. Evans" exit (#240)

LITTERING ON COURSE WILL RESULT IN IMMEDIATE DISQUALIFICATION.

NO PUBLIC URINATION, THIS IS ILLEGAL.

Please do not throw any trash on the mountain. It is a special place and we want to continue to use it. Please put trash in your pocket and dispose of trash receptacles at Summit Lake, the top and at the school. No off-trail use permitted due to sensitive environment, please do not walk, ride, or drive off the roads, or designated trails. Public urination is illegal, do not do it! Use discretion while changing at your car, please respect the residents of Idaho Springs.

Clothing Bag Transport:

No Shuttle Service included with registration; you must be prepared to ride down the mountain to the start.

Your clothing bags will be transported to the summit, which will hold warm gloves, jackets, and food for the descent. **The clothing vans will be located at the start line and will leave at 6:45am, 7:45 am and 8:50 am. Note: The descent will be cold and you will be expected to ride down, make sure you bring what you need to keep you warm in your clothing bag for the descent! Please wear highly visible clothing for the trip down the mountain, this will ensure your safety in the case of adverse weather conditions.**

CANCELLATION POLICY

The primary goal of the Bob Cook Memorial Mt. Evans Hill Climb is to operate a safe event for everyone involved. While the event recognizes the aspirations and commitment of its participants, there may be circumstances where it is deemed unsafe to proceed with the race as planned. In addition to participant safety, considerations to alter or cancel the event will be based on other factors, such as potential adverse impact on local residents and the capacity of municipal agencies and healthcare systems.

The Chief Referee and Race Director reserve the right to cancel or alter the race to avoid exposing participants and the community to undue risks that might result from staging the event under potentially hazardous conditions. Circumstances that could prompt the cancellation, alteration or postponement of the event are not always foreseeable, but include inclement weather or the threat of inclement weather (e.g. tornados, lightening, fire, high heat or icy conditions), acts of terrorism or civil unrest or the threat of terrorism or civil unrest, and similar circumstances beyond the control of event officials.

In the case of lightning, severe rain, snow, wind, fire or any other condition that affects the potential safety of the participants, spectators and volunteers, the event may be delayed, or cancelled and all participants will be asked to proceed promptly to safety.

The event will start if the weather clears (in the case of severe weather). In the case of light rain, the event will continue until or unless safety becomes an issue.

To the extent possible, notifications about weather conditions, event postponement, course adjustments and event cancellation will be communicated via the following channels: the official website (www.bicyclerace.com), e-mail notifications, Facebook, Twitter, on-course signage and flags, and public address announcements.

Event conditions resulting in race cancellation, course alteration or participant withdrawal will not warrant the refunding of race entry fees or granting of future race credits.

Regardless of event day conditions, all participants should be discerning of their own fitness level. It is understood that each participant assumes personal responsibility upon entering the event and understands the inherent risk that bicycle racing presents.

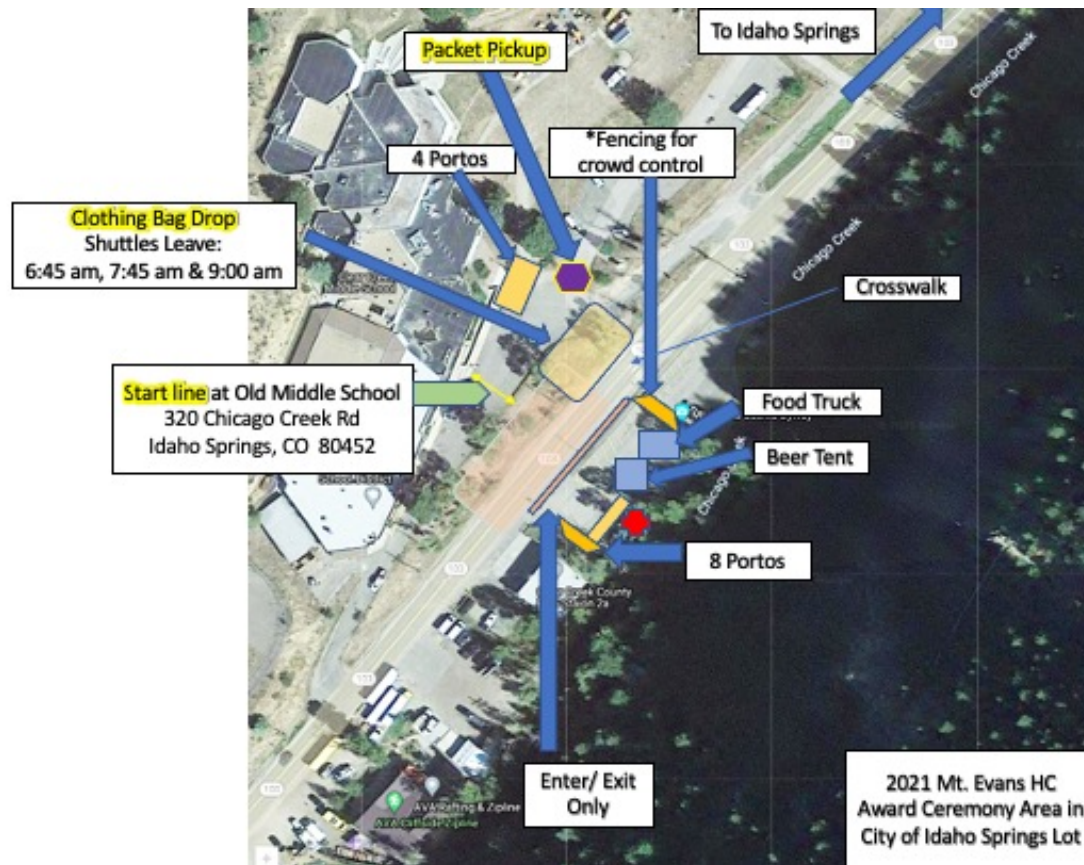
Contact:

Kim Nordquist, Race Director

303.249.6168

kimnordquist@msn.com

<http://bicyclerace.com/>



Clothing Bag Drop
Shuttles Leave:
6:45 am, 7:45 am & 9:00 am

Start line at Old Middle School
320 Chicago Creek Rd
Idaho Springs, CO 80452

Packet Pickup
Friday 1:00 -6:00 pm
Saturday 5 :00 am – 9:00 am

Award Ceremony
11:00 – 4:00 pm

Directions to start location:
I 70 to exit 240 Idaho Springs, start line is on the south side of I 70

Parking: Paid Public Lots
Some free parking on Colorado Blvd. east of town & on Soda Creek Rd.

Almost all parking is paid parking.
Download the app <https://parkmobile.io/>
\$1/ hr. for first 3 hours, then \$4/ hr.
Download app now to avoid delays.
Meters do not accept payment until 10 am,
You must pre-pay on the app. You will get
A ticket if you do not pre-pay.

2021 Mt. Evans HC
Award Ceremony Area in
City of Idaho Springs Lot