



## IMCCC MTB Omnium Finale

### October 2-3, 2021 (USAC permit 2021-6729)

#### Location

The race is at Eagle Point Resort, 1040 N Elk Meadows Dr, Beaver, UT 84713  
GPS Coordinates (38.33302194886599, -112.37372367689414)

#### Registration

The event is [online registration only](#), via BikeReg.com. **Registration closes Wednesday, September 29 at 10:00 PM.** First race costs \$30. Each additional race costs \$10 less. Therefore, the maximum for the weekend is \$60.

#### Categories

Collegiate Men's A / Open Men's A  
Collegiate Men's B / Open Men's B  
Collegiate Men's C / Open Men's C  
Collegiate Women's A / Open Women's A  
Collegiate Women's B / Open Women's B  
Collegiate Women's C / Open Women's C

To enter the collegiate races, riders **MUST** have a USA Cycling Annual License. No one-day licenses will be accepted. License status must be verified prior to race day. No licenses will be sold on site. All collegiate riders must be duly registered as part of a Colorado, Wyoming, or Utah team to earn collegiate points. Women's C will compete in the same wave as Women's B in all events, but will be scored separately.

#### Call ups for XC and STXC

Teams will be called up based on a random draw. In the first round, each team can send one rider, followed by a second round, and then a third. After the third round, everyone remaining will be staged. Non-collegiate riders will be randomly interspersed during the call ups. Each event will have a separate draw.



## Eagle Point Resort

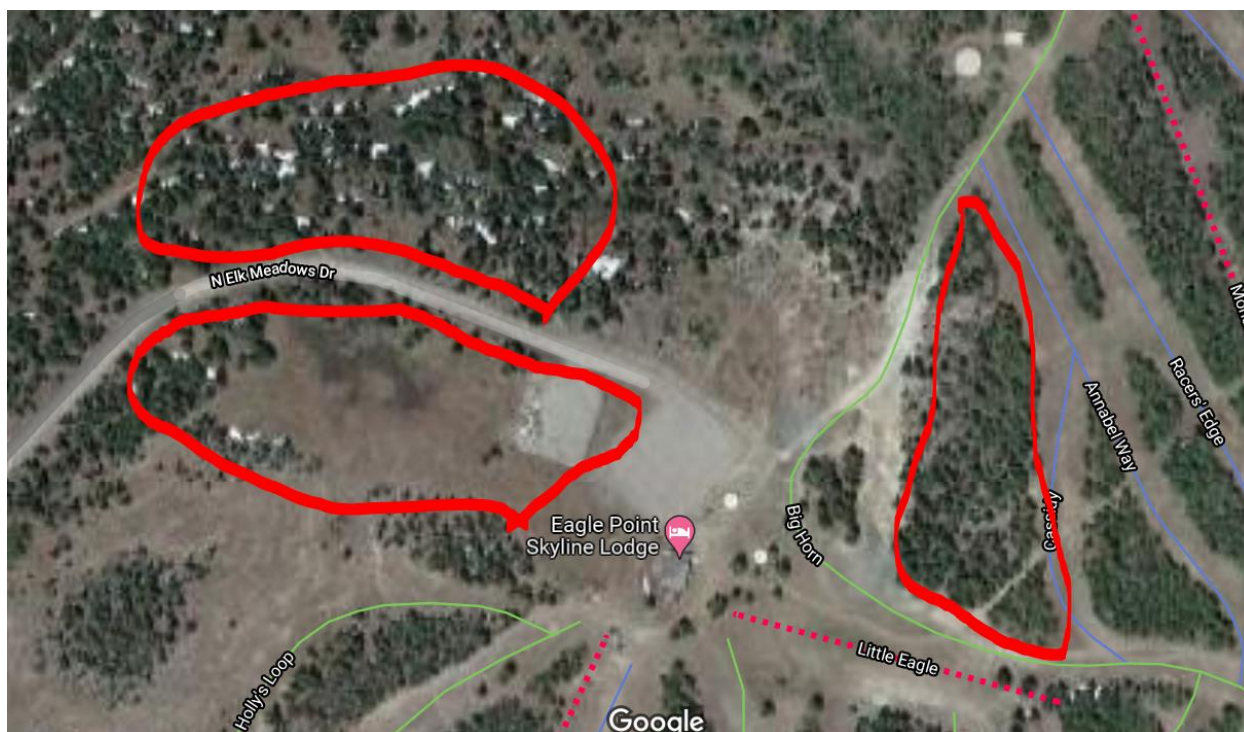
The base of operations will be the Skyline Lodge. Note there is no food at the venue. Please bring your own.

## Lift Shuttle Tickets

Lift / Shuttle tickets cost \$20, and can be purchased as a merchandise option at the time you register on BikeReg. We will be using lifts, shuttles, or perhaps both (TBD later).

## Camping

Camping will be allowed in near the Skyline Lodge. Camping can be purchased for \$10 per vehicle per night as a merchandise option at the time you register on BikeReg. See map below:





## **Accommodations**

Preferred housing is available at Eagle Point via the link below:  
<https://www.eaglepointresort.com/lodging/reservations>. There are also plenty of motels in Beaver, UT.

## **Award Ceremony**

Overall Collegiate omnium awards for the season will be given out at the end of the STXC and the DH on Sunday. Please be present shortly after the last race finishes. Top three endurance and gravity riders from Utah in each class will receive conference championship medals. Winners will receive the championship jerseys (while numbers and sizes last)



## Schedule

### Friday, October 1

#### Number Pickup\*

7:00-9:00 PM All Events and Categories

### Saturday, October 2

#### Number Pickup\*

6:00-8:00 AM All events and categories

#### Practice Times

7 AM – 3 PM XC practice

10 AM – 3 PM Gravity practice

#### XC Event

8:00 AM	Men C Women B/C
9:00 AM	Men A Men B Women A

#### Super D

1:00 PM First Start Time

\* All packet pickup is at Skyline Lodge

### Sunday, October 3

#### Number Pickup\*

6:00-8:00 a.m. All remaining events

#### Practice Times

10 AM – 3 PM Gravity Practice

#### STXC

8:00 AM	Men C (20')
8:30 AM	Women B/C (20')
9:00 AM	Men B (20')
9:30 AM	Women A (20')
10:00 AM	Men A (25')

#### Downhill Race

1:00 PM First Start Time



## **The Courses (more details to come)**

### **XC**

Monarch Loop Trail plus Endor

### **Super D**

Flow Trail

### **STXC**

Course near Skyline Lodge

### **Downhill**

Monarch Loop Counter Clockwise