



# 2019 CSU CYCLING SPRING WEEKEND

Cobb Lake Road Race and The Oval Criterium

RMCCC and Public Race Weekend

Hosted by Colorado State Rams Cycling with the support of 9Seventy Racing

Cobb Lake Road Race (April 13 <sup>th</sup> )						
Category	Start Time	Distance	Laps	Prize	Entry Fee	Field Limit
Collegiate Men B	8:00 AM	44	5	USAC Points	\$25	75
Collegiate Men C	8:05	28	3	Points	\$25	75
Collegiate Women B	8:10	28	3	Points	\$25	75
Collegiate Men A	10:00	68	8	Points	\$25	75
Collegiate Women A	10:05	44	5	Points	\$25	75
Women 4/5	10:10	28	3	Prizes/3	\$40	75
Men P/1/2	1:00	68	8	\$250/3	\$40	100
Men Cat 3	1:05	60	7	Prizes/3	\$40	100
Women P/1/2/3	1:10	52	6	\$250/3	\$40	75
Men Cat 1/2/3 40+	4:00	60	7	Prizes/3	\$40	100
Men Cat 4/5	4:05	44	5	Prizes/3	\$40	75
Men Cat 4/5 40+	4:10	44	5	Prizes/3	\$40	75
The Oval Criterium (April 14 <sup>th</sup> )						
Collegiate Men C	8:00 AM	25 mins + clinic		USAC Points	\$25	75
Collegiate Women B	8:50	30 mins + clinic		Points	\$25	75
Collegiate Men B	9:45	45 mins		Points	\$25	75
Collegiate Women A	10:45	45 mins		Points	\$25	75
Collegiate Men A	11:45	60 mins		Points	\$25	75
Kids Race	1:00	1 Lap		Medals/3	FREE	75
Men Cat 4/5	1:15	40 mins		Prizes/3	\$35	75
Women Cat 4/5	2:10	40 mins		Prizes/3	\$35	75
Men Cat 3	3:05	45 mins		Prizes/3	\$35	100
Women Pro 1/2/3	4:05	50 mins		\$250/3	\$35	100
Men Pro 1/2	5:10	60 mins		\$250/3	\$35	100

## Help and Information

Please contact [csuramscycling@gmail.com](mailto:csuramscycling@gmail.com) or the race director at (949)910-7289.

## Registration – PLEASE PREREG ONLINE

Please register online through the link here (Closes April 11<sup>th</sup> at 10:00pm):

<https://legacy.usacycling.org/myusac/index.php?pagename=registration&eventid=370&year=2019>

If you race twice in one day, the additional race price: \$10

Registration after April 4 at 10:00 pm for Non-Collegiate Categories – Entry Fee, Plus \$5

Day of Registration for Non-Collegiate Categories – Entry Fee, Plus \$10

We have a no refund policy.

Day of registration will take place at the registration tent near the start. We will open at 7:00 am and close 40 minutes before the start of each category, Entry fee includes USAC Surcharges.

USAC Permit Number 2019-370



## Rules

All USAC Rules apply including junior gear and bike restrictions.

**Circuit Race:** Centerline Rule, Feed Zone (available for races longer than 45 mi) and discard zones in effect. **No support on the road – Bring spare & pump.** However, there will be a wheel pit at the finish line – Wheels in, wheels out.

**Criterion:** Free lap rule in effect until 5 laps to go in each field. Wheel pit at start - Wheels in, wheels out.

## License and Membership

**USAC races:** USAC license required. USAC 1-day license is \$10, only for Cat 5 men and women. BRAC Annual membership recommended to avoid BRAC 1-day membership fee (\$5). BRAC membership exempt with USAC 1-Day and out-of-state riders. Annual BRAC membership available at [www.coloradocycling.org](http://www.coloradocycling.org)

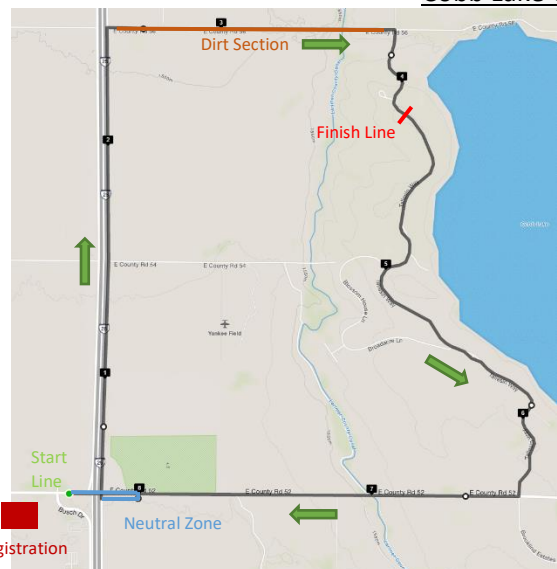
**Collegiate riders** entering non-collegiate races must have a USAC license.

**Collegiate Races:** USAC Collegiate license required. Collegiate 1-day (\$10) only available onsite for B and C races.

Annual USAC Collegiate licenses available online at [www.usacycling.org/register](http://www.usacycling.org/register)

**Juniors (racing age 18 & under) race free in their categories!** Please use the coupon code “junior”

### Cobb Lake Circuit Race Information:



NOTE: \*\*The Dirt Section is rougher than ordinary pavement. Bring suitable tires!\*\*

#### Parking and Registration

Event Parking and Registration for Cobb Lake will be at the Budweiser Headquarters Just west of the Richards Lake Rd and Busch Drive intersection in the North Construction Parking Lot. Please exit I-25 at the Mountain Vista Exit, then head North on Giddings Rd, then east on Richards Lake Rd to reach the parking lot.

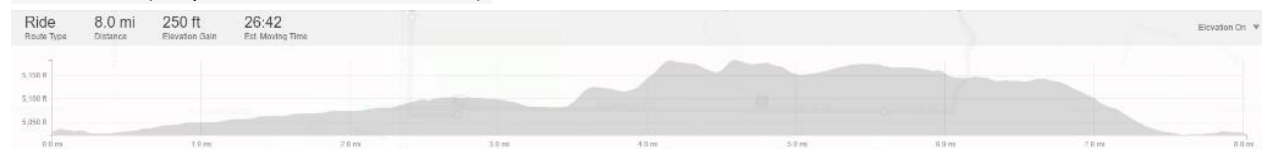
#### Neutral Zone

There will be a neutral start (highlighted in blue) from the green dot (start line) until you turn right a second time, heading north on the frontage road. Racing begins on the frontage road.

#### Lap Count

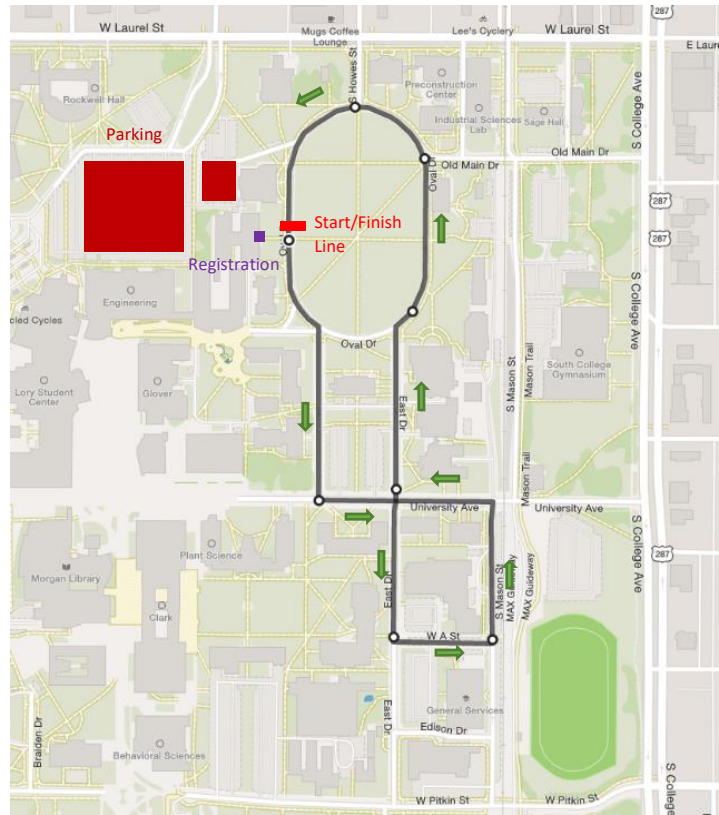
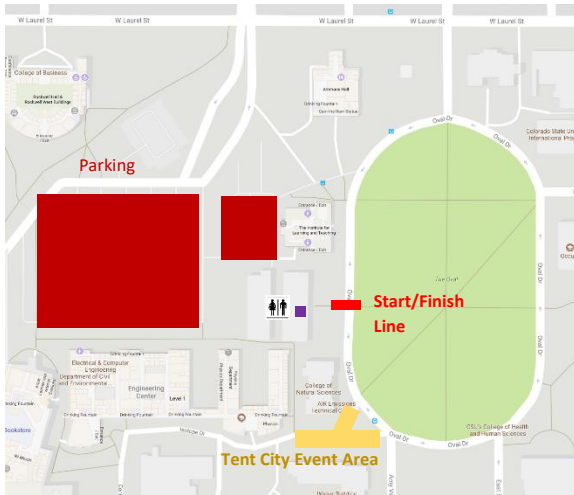
Since the start is on the opposite end of the course from the finish (Red Line), when you cross the finish line for the first time, your lap count will be (Example: if your field races 5 laps, it will actually be 5.5 laps total).

### Race Profile (1 lap with 0.3 mi neutral zone):



## Oval Criterion Race Information:

Zoomed In Event Area Map:



### Parking

To get to parking, Exit I-25 at the Mulberry Exit. Head west until you reach College Ave and turn south (left turn). Take College Ave to Laurel St and turn west (right turn). At the third light, take a left. Parking will be in the parking lot just North of the CSU Engineering Building.

### Registration

This will be next to the start/finish line on the Oval inside the Weber Building, just east of the parking lots.

### Help Volunteer!

If you would like to help volunteer for this race weekend, please go to:  
<https://www.signupgenius.com/go/20F094FA4AE2CA13-csucobb1>

**Thank you for being a part of and supporting the Colorado State University  
Cycling Club!!**

